

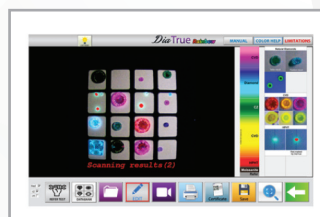
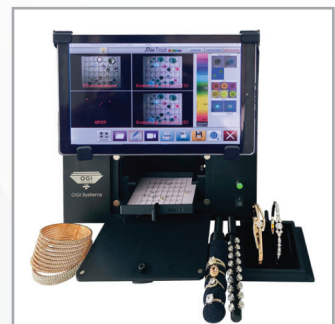
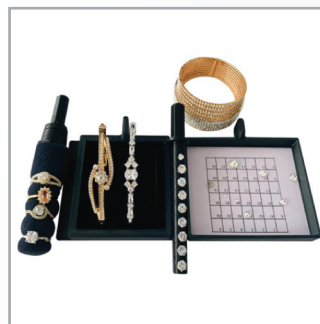
# DiaTrue CS



- Detects CVD & HPHT lab-grown diamonds, can also see CZ, Moissanite, and even CZ coated with CVD.
- Identifies stones on small jewelry like rings, unmounted diamonds & melee parcels.
- Scans in approximately 20 sec.
- Large embedded 10.9" touchscreen tablet.
- Results displayed in clear and easy to read colors.
- Ability to create & print certificate.
- Save and archive data on the tablet.
- Zoom & print results.

## WHAT IS INCLUDED:

- Diatrue accessories (Stones tray, Rings tray).
- IEC mains supply lead (county specific).
- Power Supply.
- Operating Manual.
- 1 year parts/service warranty.

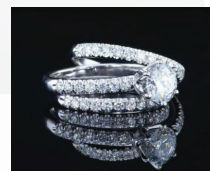


## SPECIFICATIONS:

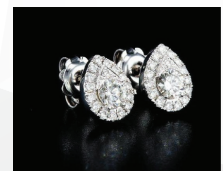
- 10.9" tablet with touch screen display.
- Light Source: UV Light.
- Voltage: 110/220 V.
- Working area: 6x5 cm.
- Weight: 6kg.
- Dimensions: L21.5 x W26.5 x H25cm.



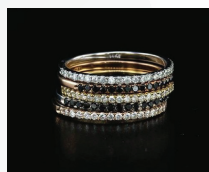
Diamonds, HPHT, CVD, CZ, Moissanite



Rings



Earrings



Bracelets



Tennis



Small Jewellery

Anvox

WWW.ANVOXTECH.COM, HONG-KONG. Email: info@anvox.net