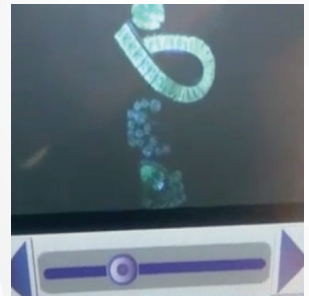
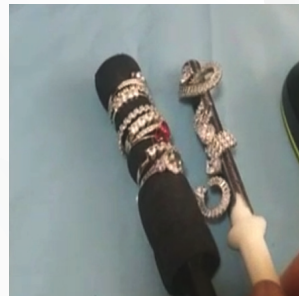
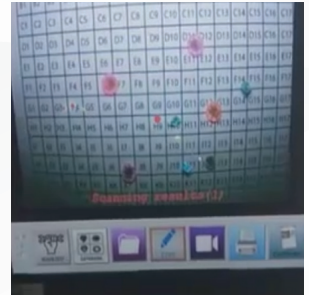
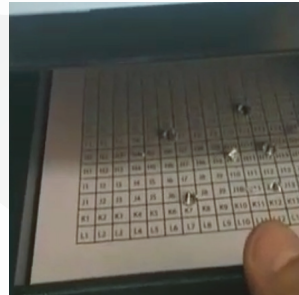
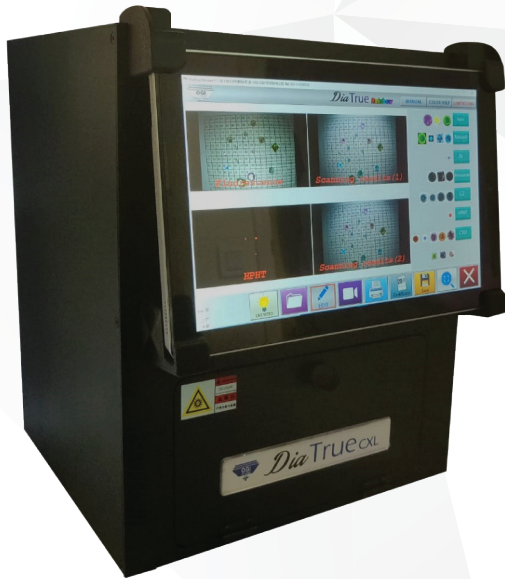


DiaTrue CXL



- Detects CVD & HPHT lab-grown diamonds, can also see CZ, Moissanite, and even CZ coated with CVD.
- Identifies stones on small jewelry like rings, unmounted diamonds & melee parcels.
- Scans in approximately 20 sec.
- Large embedded 10.9" touchscreen tablet.
- Results displayed in clear and easy to read colors.
- Ability to create & print certificate.
- Save and archive data on the tablet.
- Zoom & print results.

WHAT IS INCLUDED:

- Diatru accessories (Stones tray, Rings tray).
- IEC mains supply lead (county specific).
- Power Supply.
- Operating Manual.
- 1 year parts/service warranty.

SPECIFICATIONS:

- Embedded touchscreen computer & mouse.
- 10.9" touch screen display.
- Light Source: UV Light.
- Voltage: 110/220 V.
- 3 tray levels area size 13x10 cm (stones tray, jewelry and bracelets tray).
- Dimension: L 28 x W 27 x H 36 cm.
- Weight: 8 kg.
- All types of jewelry and mounted combinations.
- Melee parcels and loose diamonds.
- Recommended color range: D-K.
- Convenient, self-contained unit.

Anvox

WWW.ANVOXTECH.COM, HONG-KONG. Email: info@anvox.net